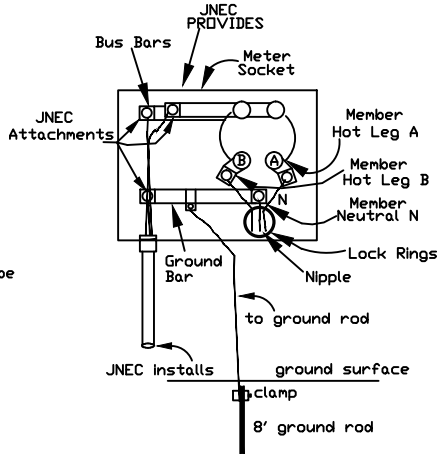
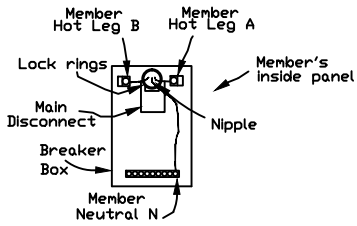
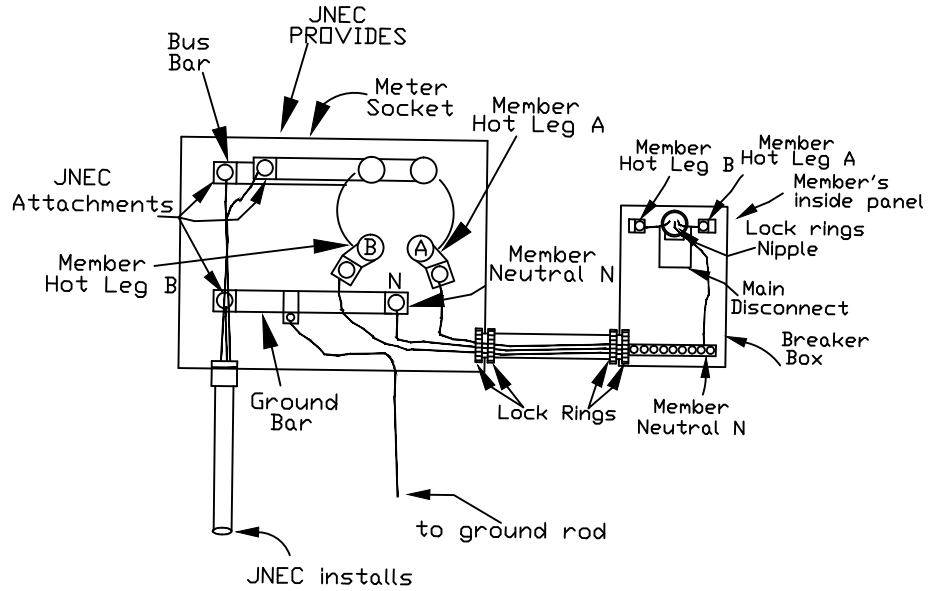


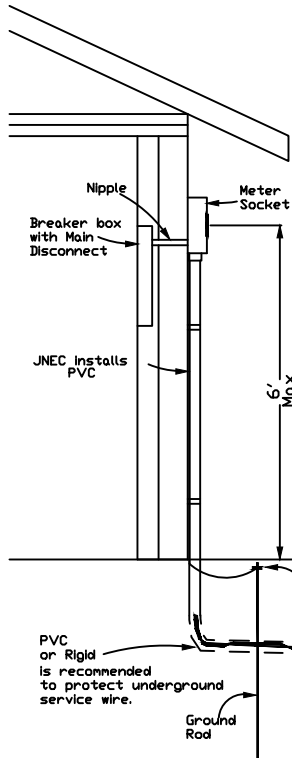
JASPER NEWTON ELECTRIC COOPERATIVE, INC.
 UNDERGROUND SERVICE SPECIFICATIONS



Neutral must be identified.



All Wires Leaving Breaker Box
 MUST BE IN
 Electrical/Gray Conduit



100 AMP CAPACITY

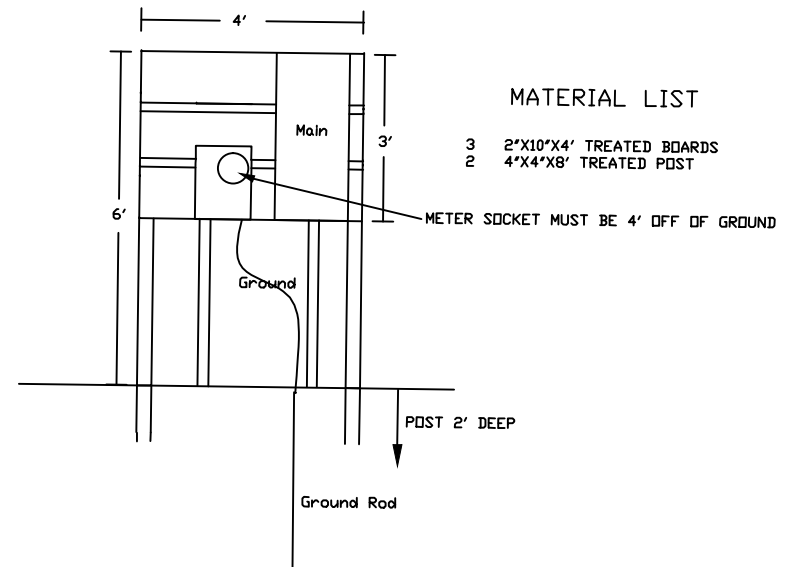
Qty.	Description
1	#4 THW Copper Conductor to disconnect box
1	5/8 x 8' copper coated or galvanized ground rod
1	Ground rod clamp
1	#6 Copper wire (solid or stranded) to ground rod
1	100 Amp Main disconnect required
1	2" Nipple (from meter socket to breaker box)
4	2" Lock rings
1	Underground Meter socket (furnished by Coop.)

200 AMP CAPACITY

Qty.	Description
1	2/0 THW Copper Conductor to 200 amp disconnect box
1	5/8 x 8' copper coated or galvanized ground rod
1	Ground rod clamp
1	#4 Copper wire (solid or stranded) to ground rod
1	200 Amp Main disconnect required
1	2" Nipple (from meter socket to breaker box)
4	2" Lock rings
1	Underground Meter socket (furnished by Coop.)

All Wires Leaving Breaker Box
 MUST BE IN
 Electrical/Gray Conduit

Revised 05/24/2016



MATERIAL LIST

- 3 2"x10"x4' TREATED BOARDS
- 2 4"x4"x8' TREATED POST

METER SOCKET MUST BE 4' OFF OF GROUND